

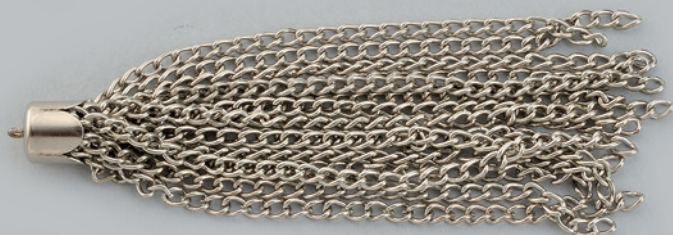
# Nappine

**F** = Ferro   **A** = Alluminio   **O** = Ottone   **Z** = Zama  
**F** = Iron   **A** = Aluminium   **O** = Brass   **Z** = Zamak alloy

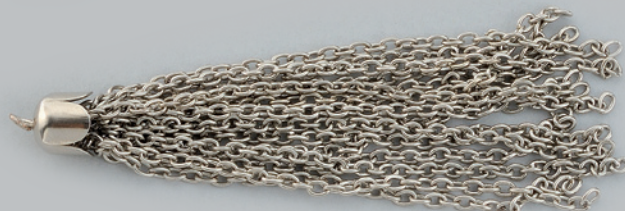


dimensioni (mm)		
L	Ø filo	descrizione

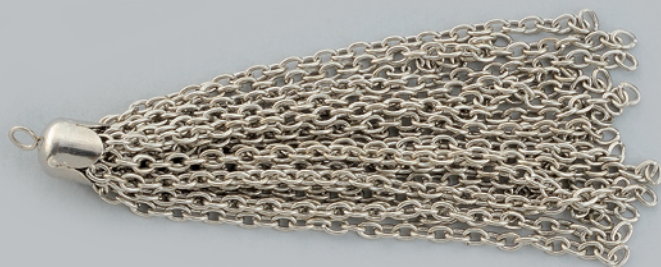
3V <b>F</b> 263	50.0	0.45	10 file
3V <b>F</b> 264	75.0	0.45	15 file
3V <b>F</b> 265	75.0	0.45	20 file



3V <b>F</b> 254	50.0	0.6	10 file
3V <b>F</b> 255	75.0	0.6	15 file
3V <b>F</b> 256	75.0	0.6	20 file



3V <b>F</b> 257	50.0	0.45	10 file
3V <b>F</b> 258	75.0	0.45	15 file
3V <b>F</b> 259	75.0	0.45	20 file



3V <b>F</b> 260	50.0	0.6	10 file
3V <b>F</b> 261	75.0	0.6	15 file
3V <b>F</b> 262	75.0	0.6	20 file